

## COMPRESSION PLATENS

Self-aligning and fixable platens.  
Spherical seat – the platen adjusts to the specimen.  
It is possible to fix the platen at a required angle with 4 nuts.

### SPS223i:

- For lightweight specimens (packaging material etc.)
- Aluminum, anodized

### SPS223k, SPS223g, SPS223w, SPS223z:

- Applicable for all types of compression tests; for concrete etc.
- Steel 58 HRC, nickel-plated

### SPS223b:

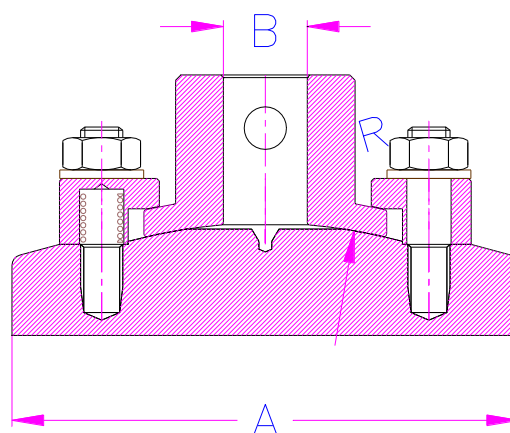
- Platens with a large angular displacement of up to  $\pm 10^\circ$
- Aluminum, anodized (-Al) or steel 58 HRC, nickel-plated (-St)

### Ordering information

Scope of delivery: 1 platen



SPS223i for adapters up to 8 -10 mm Ø			
Item no.	Diameter	Weight	Radius
SPS223i-56	56 mm	60 g	50
SPS223k for adapters 12 - 25 mm Ø			
Item no.	Diameter	Weight	Radius
SPS223k-56	56 mm	1.27 kg	100
SPS223k-96	96 mm	1.4 kg	100
SPS223k-116	116 mm	1.7 kg	100
SPS223k-156	156 mm	2.7 kg	100
SPS223k-196	196 mm	3.95 kg	100
SPS223g for adapters 30 - 50 mm Ø			
Item no.	Diameter	Weight	Radius
SPS223g-56	56 mm	5.3 kg	200
SPS223g-96	96 mm	6.1 kg	200
SPS223g-116	116 mm	6.5 kg	200
SPS223g-156	156 mm	7.1 kg	200
SPS223g-196	196 mm	7.4 kg	200
SPS223w for adapters 50 - 60 mm Ø			
Item no.	Diameter	Weight	Radius
SPS223w-156	156 mm	7 kg	300
SPS223w-196	196 mm	9.8 kg	300
SPS223z for adapters larger than 60 mm Ø			
On request			
SPS223b: big angle version standard adapter Af15.9 mm			
Further adapters on request			
Item no.	Diameter	Weight	Angle
SPS223b-100-Al	100 mm	0.9 kg	$\pm 10^\circ$
SPS223b-150-Al	150 mm	1.5 kg	$\pm 10^\circ$
SPS223b-200-Al	200 mm	2.1 kg	$\pm 10^\circ$
SPS223b-200-St	200 mm	5.2 kg	$\pm 10^\circ$



Max. capacity depends on coupling size (B).

### Adapters to mount SPS223 platen on SP36 platen

Item no.	Description:
SPS223k-Af159-SP36	Adapter to mount SPS223k on SP36, angle $\pm 1.5^\circ$ , coupling Af15.9 mm
SPS223g-Af159-SP36	Adapter to mount SPS223g on SP36, angle $\pm 1.5^\circ$ , coupling Af15.9 mm
SPS223b-Af159-SP36	Adapter to mount SPS223b on SP36, angle $\pm 10^\circ$ , coupling Af15.9 mm

Further dimensions and modifications on request

Types i k g w Z b X:	
i = very small	i = adapter 8, spherical radius R50
k = small	k = adapter 14-20, spherical radius R100
g = large	g = adapter 30-50, spherical radius R200
w = very large	w = adapter 60-70, spherical radius R300,
Z = very large, pitch circle diameter	inner Ø of clamping ring 116 mm
B = large angle	Z = adapter 80, spherical radius R300,
X = eXotic solution	inner Ø of clamping ring 125 mm
	B = $\pm 10^\circ$ swivelling, spherical radius b30
	(30 mm Ø for Af159 and Af20; -b60 - 60 mm Ø for Af30)
	X = with pitch circle, external spring
	(without Af or Am adapter)
	S = with internal thread, external spring, exotic solution

**Temperature range:** -70 ... + 180°C (aluminium); -70 ... +280°C (steel)  
Further temperature ranges on request

		
SPS223i-56-Af8	SPS223k-116-Af159	SPS223b-100-Af159-Al Aluminum
		
SPS223b-200-Af159-St Steel	SP23-56-Af159-St + 1 x SPS223k-56	
		
SP36-250-Af159	SPS223k-Af159+SP36-250	
<p>Self-aligning platen SPS223 can be combined with a square platen SP36</p> <p>Combination for square platen: 1x rigid and 1x self-aligning platen. For example, on the picture above: 1 pair of square SP36-250 platens combined with an intermediate platen SPS223k-Af159-SP36 with self-aligning adapter. The intermediate platen is mounted on the aluminium platen.</p>		

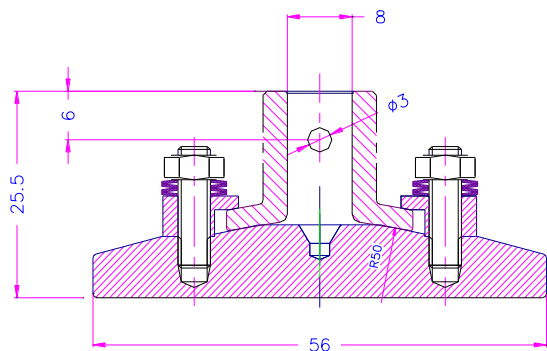
### Videos demonstrate how the platens work:

The self-aligning movement of the platen does not need much force:



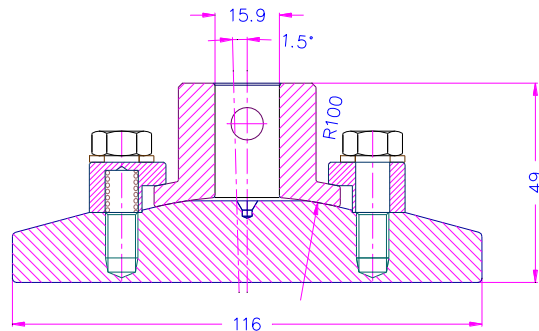
The self-aligning movement of the platen can be fixed by tightening the 4 nuts:



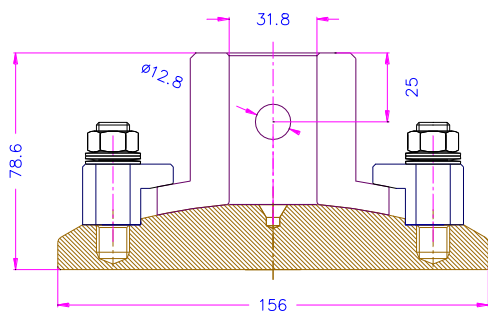


60gr Alu

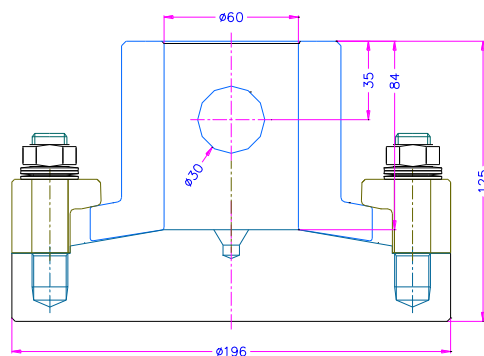
SPS223i-56-Af8



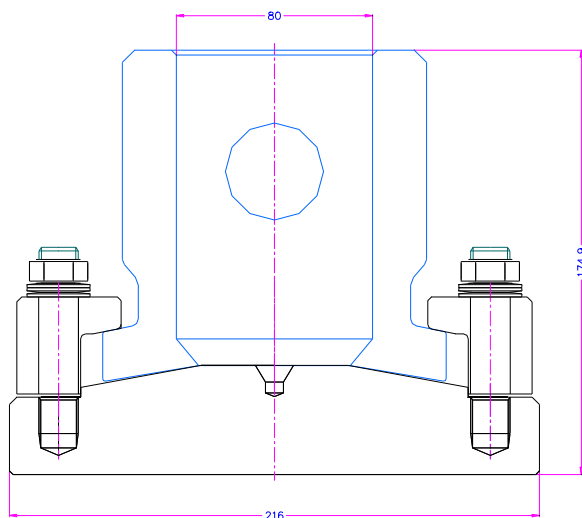
SPS223k-116-Af159



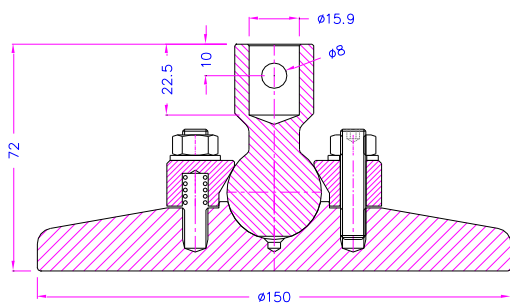
SPS223g-156-Af318



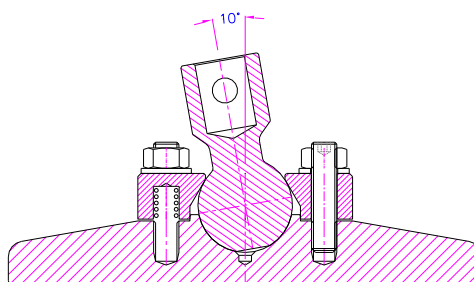
SPS223w-196-6030-35








SPS223z-156-Af80



SPS223b-150-Af159



## Examples for customized modifications:

	
<p><b>SPS223X-220-M20</b></p> <p>Steel spherically-seated compression platen Not fixable Max. load 600 kN</p>	<p><b>SPS223X-136-AFM36</b></p> <p>Not fixable</p>
	
<p><b>SPS223k-Af159-SP36 + SP36L-D200-L6x20-AL</b></p>	<p><b>SP223b-56-Af159</b></p> <p>56 mm diameter spherically-seated, fixable, angle <math>\pm 10^\circ</math></p>
	<p><b>SP36-D200-R1 + SPS223b-Af159 - DIN EN ISO2439</b></p> <p>Compression platen with ball joint to measure the indentation hardness of flexible cellular materials according to DIN EN ISO2439 Diameter 200 mm, radius 1 mm</p> <p>For bottom platen we recommend SP36L-400-L6x20</p>