

PNEUMATIC BOLLARD GRIPS 200 N, 2 kN, 5 kN, 10 kN

- Depending on type, applicable for tensile tests on fibers, fine wires, cords, filaments, yarns, etc.
- Guide horn with centering groove
- Specimen is wrapped 180° around the bollard to prevent the breakage in the clamping area by generating a slow notch free stress relief



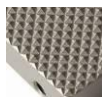
Item number:	SPS13k	SPS13m SPS13m+SSB	SPS13g-5	SPS13g-10
Applicable for:	Fibers, filaments, etc.	Yarns, cords, strands, etc.	Wires, strands, cords, etc.	
Tensile force:	200 N	2 kN	5 kN	10 kN
Clamping force:	900 N / 7 bar 2 kN / 16 bar	6 kN / 7 bar (SPS13m) 13 kN/ 16 bar (SPS13m+SSB)	6 kN / 7 bar 14 kN / 16 bar	14 kN / 7 bar 33 kN / 16 bars
Recommended specimen Ø:	0-2 mm Ø	0-6 mm Ø	0-8 mm Ø	
Minimal specimen length:	15 cm	25 cm	30 cm	
Clamping surface HxW:	6x20 mm	12x36 mm	15x44 mm	
Coupling:*	Af8	Af159		
Pneumatic connection:	M3 for micro fittings or with additional adapter (SP205-PK23) for 1/8" normal pneumatics	Internal thread M5		
Body:	Aluminum, anodized			
Bollard:	Anodized aluminum	Anodized aluminum (SPS13m) Stainless steel (SPS13m+SSB)	Anodized aluminum	Stainless steel
Temperature range:	-10 ... +80°C. Further temperature ranges on request			
Weight per grip incl. jaws:	0.15 kg	1.13 kg (SPS13m) 1.25 kg (SPS13m+SSB)	1.82 kg	2.22 kg
Scope of delivery:	1 pair of grips without jaws			

*Further couplings on request

Jaw surfaces for SPS13:



SPS13-B
Blank jaws



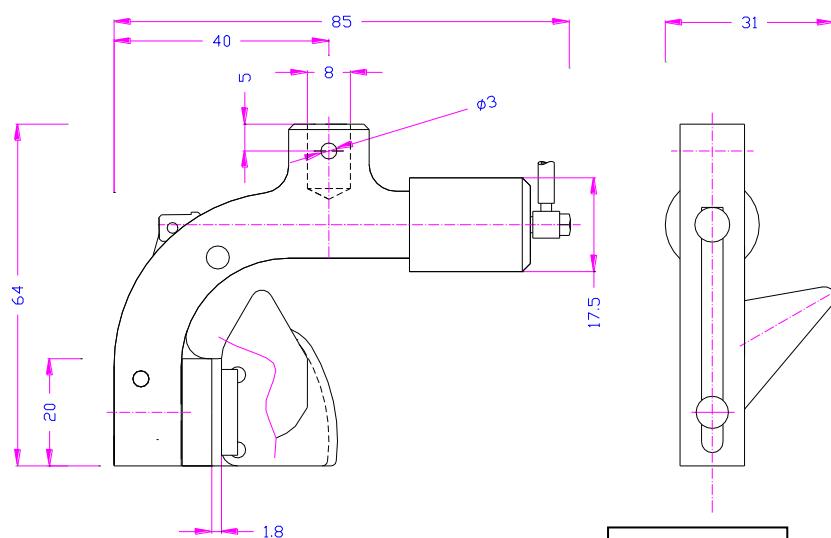
SPS13-BP
Pyramid (serrated) jaws



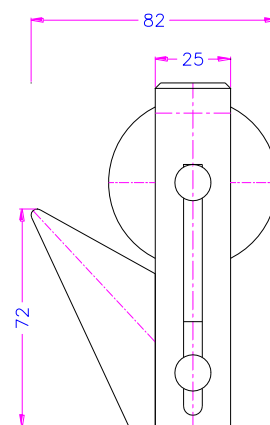
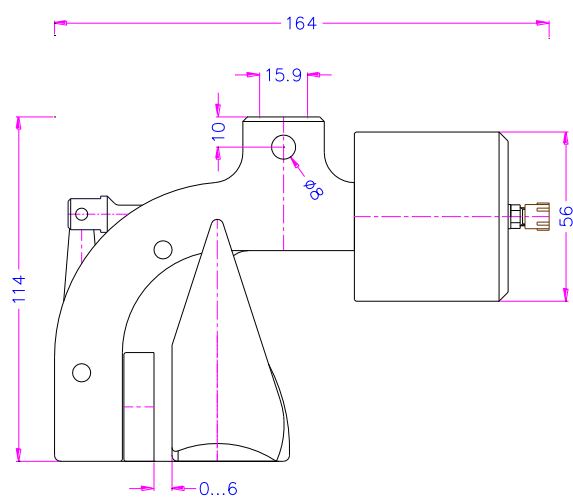
SPS13-BG*
Rubber-faced jaws
*Max. temperature +70°C



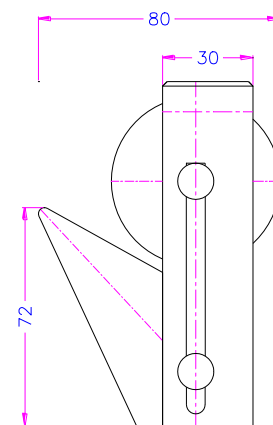
SPS13-BD
Diamond-faced jaws



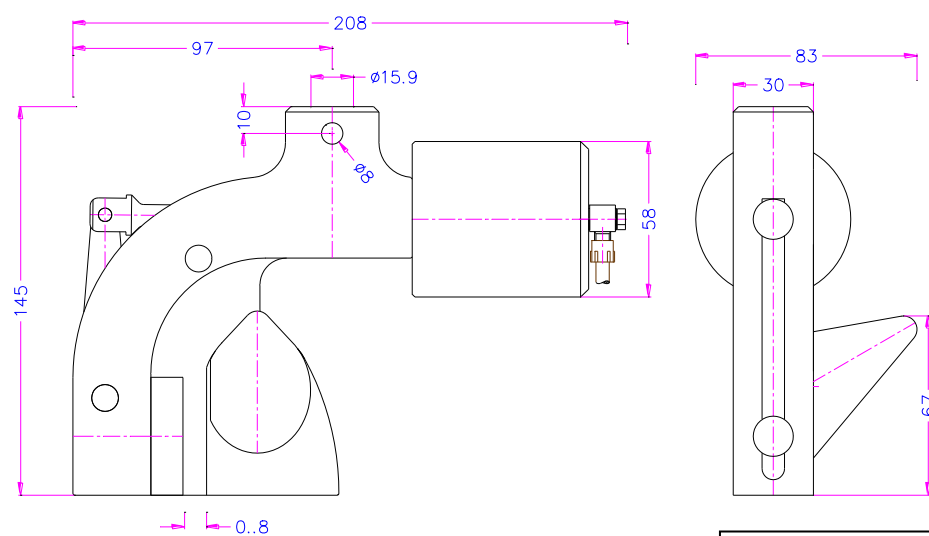
SPS13k



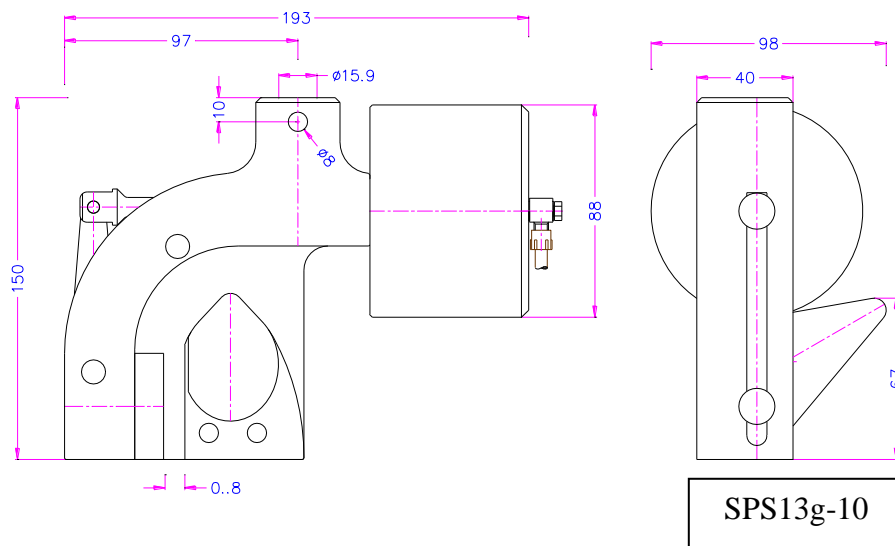
SPS13m



SPS13m+SSB



SPS13g-5



SPS13g-10-ssb
Interchangeable stainless steel bollard



SPS13k-Af8 + SP205-PK23 adapter

Pneumatic accessories



SP205-1 Foot pedals

None locking: The jaws of the grip open by pressing the foot pedal and close after removing the foot from the pedal.

Scope of delivery: 1 pair of foot switches including tubes and fittings



SP205-2 Foot pedals

With locking function: The jaws of the grip open by pressing the foot pedal and remain opened after removing the foot from the pedal. The jaws close by pressing the pedal one more time.

Scope of delivery: 1 pair of foot switches including tubes and fittings



SP205-PR16bar Pressure regulator

Optional for SP205-1 or SP205-2

To adjust air pressure: 1-16 bar



SP205-3 Hand switches

With locking function: The jaws of the grip close by pulling the handle and remain closed. The jaws open by pushing the handle back.

Scope of delivery: 1 unit of hand switches including tubes and fittings



SP205-4-M5 Hand switches

Pneumatic micro – hand switches, tubes and fittings, M5 connection

With locking function: The hand switches are directly installed at the grips, 3/2 directional valve. Only for single action rods with spring inside.

Scope of supply: 2 hand switches including tubes and fittings



SP216 Silent compressor for laboratories, oil-lubricated, with pressure reducer

Max pressure 16 bar; 230 V/50 HZ; noise level: 38 dB(A)

Motor: 0.13 kW; displacement: 17 l/min; tank size 3.5 l

Dimensions: 340x290x340 mm (L x W x H); weight 18 kg

19.03.2025OI