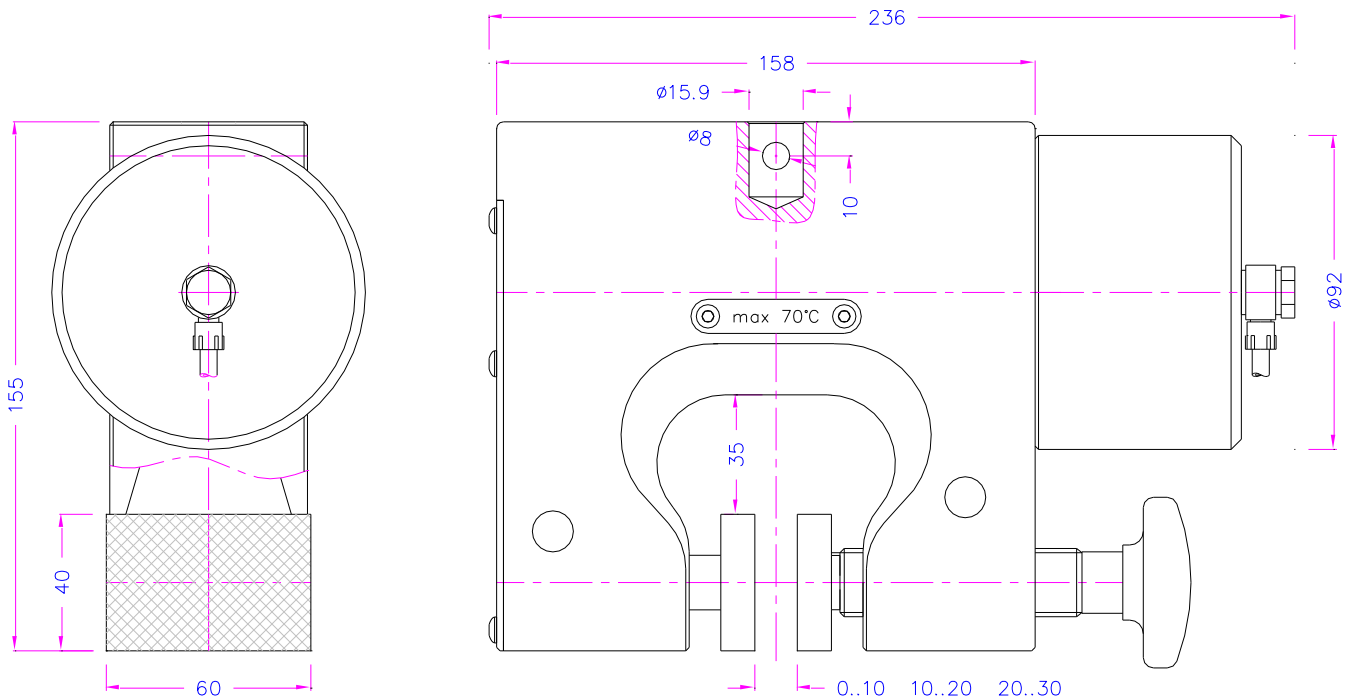
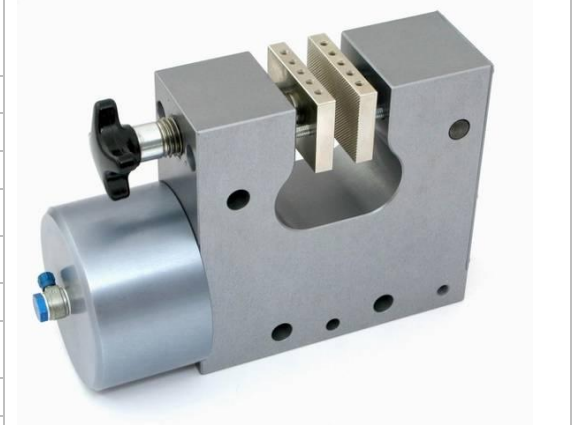
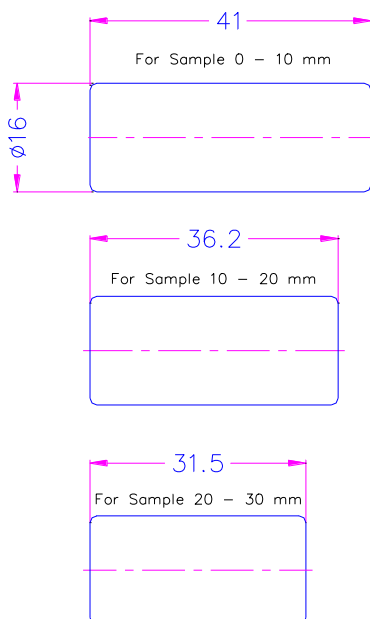


## SP232 PNEUMATIC GRIP WITH LEVER TRANSMISSION

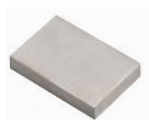
Item no.:	SP232
Max. clamping load:	12 kN /7 bar (25 kN /15 bar)
Adjustable jaw opening:	0-10 mm, 10-20 mm, 20-30 mm
Coupling:	Af159 (5/8") Further couplings on request
Pneumatic connection:	Inner thread 1/8"
Body:	Anodized aluminum
Temperature range:	0°C ... +70°C Further temperature ranges on request
Weight:	4.5 kg per grip without jaws
Scope of delivery:	1 pair of grips



jaw opening can be adjusted by using rods of different lengths:

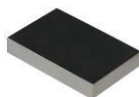


**Jaws for SP232:** Scope of delivery: 1 Set = 4 jaws



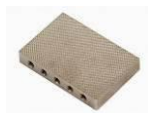
**SP232-B Blank (smooth) jaws**

- Suitable for own further treatments
- Steel-blanks without coating



**SP232-BG Rubber coated jaws**

- 1 mm rubber coating (NBR)
- Nickel-plated



**SP232-BP Pyramid jaws (serrated)**

- Pyramids 1.2x45
- Hardened steel 58HRC
- Nickel-plated°



**SP232-BV V-jaws**

- For all kinds of round samples
- Tooth pitch 1.2 mm
- Hardened steel 58HRC
- Nickel-plated



**SP232-BW Wave jaws (corrugated)**

- For flexible materials
- Wave 5 mm
- Hardened steel 58HRC
- Nickel-plated



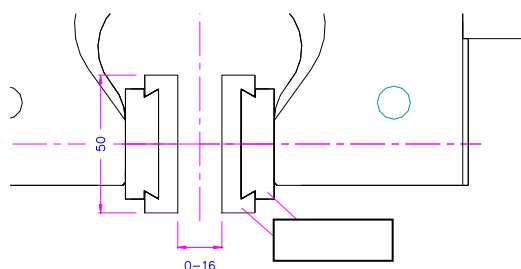
**SP232-BD Diamond coated jaws**

- Clamping surface coated with synthetic diamonds D91 (170/200 mesh)
- Nickel-plated

Item number	Surface	Clamping surface H x W	Opening*	Weight 1 pair
SP232-B	Blank jaws	40 x 60 mm	0-30 mm	0.35 kg
SP232-BG	Rubber-coated jaws	40 x 60 mm	0-28 mm	0.36 kg
SP232-BP	Pyramid jaws	40 x 60 mm	0-30 mm	0.33 kg
SP232-BV3	V-jaws	Height 40 mm	3-20 mm Ø	0.35 kg
SP232-BV6	V-jaws	Height 40 mm	6-30 mm Ø	0.35 kg
SP232-BW	Wave jaws	40 x 60 mm	0-30 mm	0.40 kg
SP232-BD	Diamond-coated jaws	40 x 60 mm	0-30 mm	0.35 kg
SP232-B100	Blank jaws	40 x 100 mm	0-30 mm	0.72 kg
SP232-BG100	Rubber-coated jaws	40 x 100 mm	0-28 mm	0.74 kg
SP232-BP100	Pyramid jaws	40 x 100 mm	0-20 mm	0.69 kg
SP232-BW100	Wave jaws	40 x 100 mm	0-30 mm	0.66 kg
SP232-BD100	Diamond-coated jaws	40 x 100 mm	0-30 mm	0.72 kg
SP232-BP200	Pyramid jaws	60 x 200 mm	0-30 mm	3.00 kg
SP232-BG200	Rubber-coated jaws	60 x 200 mm	0-25 mm**	3.06 kg
SP232-BW200	Wave jaws	60 x 200 mm	0-30 mm	3.00 kg

\*Rods for opening 10-20 mm and 20-30 mm are included in the scope of delivery of the grips

\*\*with rods for opening 10 - 20 mm



**Insert jaws for SP232:**

Jaw quick-change system. Insert jaws require a carrier (SP232-GT)

Scope of delivery: 1 set = 4 jaws

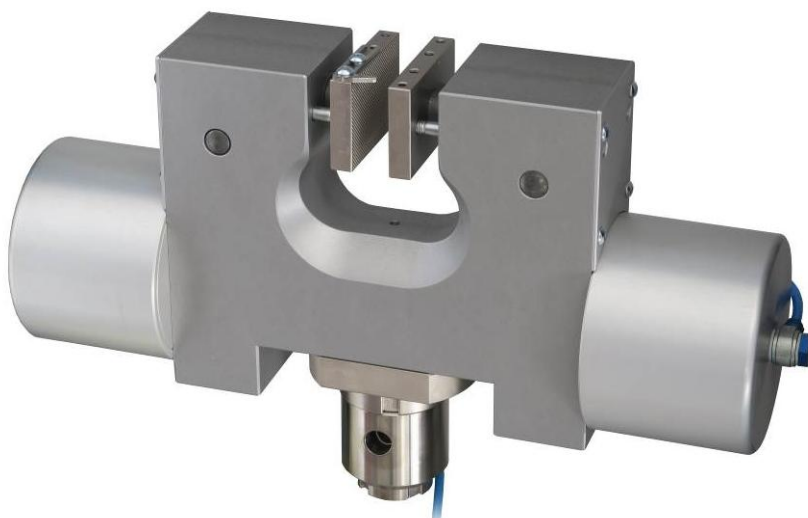
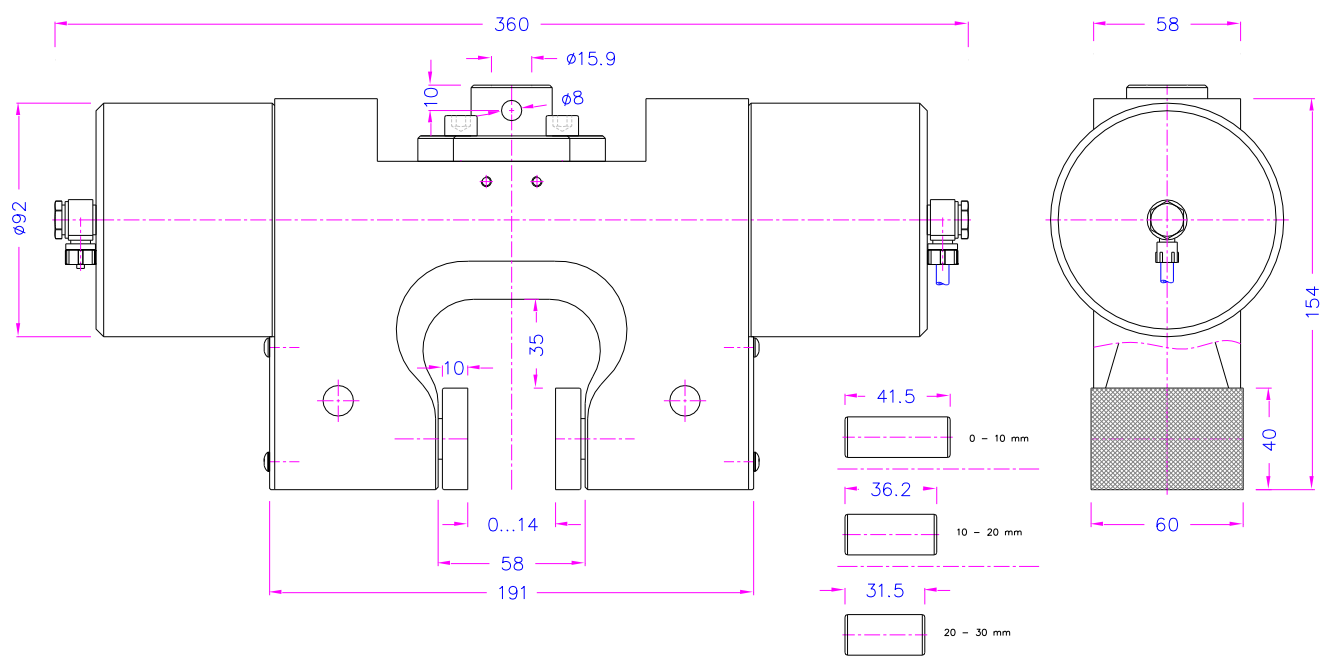
Item number	Surface	Clamping surface H x W	Opening*	Weight 1 pair
SP232-GT	Carrier	-	-	0.33 kg
SP232-EB	Blank insert jaws	50 x 60 mm	0-16 mm	0.29 kg
SP232-EBG	Rubber coated insert jaws	50 x 60 mm	0-14 mm	0.30 kg
SP232-EBP	Pyramid insert jaws	50 x 60 mm	0-16 mm	0.28 kg
SP232-EBV4	V insert jaws	Clamping height 50 mm	4-16 mm	0.29 kg
SP232-EBW	Wave insert jaws	50 x 60 mm	0-16 mm	0.26 kg
SP232-EBD	Diamond coated insert jaws	50 x 60 mm	0-16 mm	0.29 kg
SP232-GT100	Carrier	-	-	0.69 kg
SP232-EB100	Blank insert jaws	50 x 100 mm	0-16 mm	0.63 kg
SP232-EBG100	Rubber coated insert jaws	50 x 100 mm	0-14 mm	0.65 kg
SP232-EBP100	Pyramid insert jaws	50 x 100 mm	0-16 mm	0.60 kg
SP232-EBW100	Wave insert jaws	50 x 100 mm	0-16 mm	0.57 kg
SP232-EBD100	Diamond coated insert jaws	50 x 100 mm	0-16 mm	0.63 kg

\*On request: opening 9-19 mm

Jaws with other dimensions and surface coatings on request

## SP232+2Ko PNEUMATIC GRIP WITH LEVER TRANSMISSION

Item no.:	SP232+2Ko
Max. clamping load:	12 kN / 7 bar (25 kN / 15 bar)
Adjustable jaw opening:	0-10 mm, 10-20 mm, 20-30 mm
Coupling:	Af159 (5/8") Further couplings on request
Pneumatic connection:	Inner thread 1/8"
Body:	Anodized aluminum
Temperature range:	0°C ... +70°C Further temperature ranges on request
Weight:	5.18 kg per grip without jaws
Scope of delivery:	1 pair of grips



## Accessories:



### SP205-1 Foot pedals

None locking: The jaws of the grip open by pressing the foot pedal and close after removing the foot from the pedal.  
Scope of delivery: 1 pair of foot switches including tubes and fittings



### SP205-2 Foot pedals

With locking function: The jaws of the grip open by pressing the foot pedal and remain opened after removing the foot from the pedal. The jaws close by pressing the pedal one more time.  
Scope of delivery: 1 pair of foot switches including tubes and fittings



### SP205-PR16bar Pressure regulator

Optional for SP205-1 or SP205-2  
To adjust air pressure: 1-16 bar



### SP205-3 Hand switches

With locking function: The jaws of the grip close by pulling the handle and remain closed. The jaws open by pushing the handle back.  
Scope of delivery: 1 unit of hand switches including tubes and fittings



### SP205-4-1/8'' Micro hand switches

Pneumatic micro hand switches with 1/8" connection, tubes and fittings  
With locking function (see SP205-3)  
The hand switches are directly mounted at the grips. 3/2 directional valve  
Scope of supply: 2 hand switches including tubes and fittings



### SP216 Silent compressor for laboratories, oil-lubricated, with pressure reducer

Max pressure 16 bar; 230 V/50 HZ; noise level: 38 dB(A)  
Motor: 0.13 kW; displacement: 17 l/min; tank size 3.5 l  
Dimensions: 340x290x340 mm (L x W x H); weight 18 kg

**Similar grips:** SP83, SP126, manual SP154