

WEDGE GRIP

Item no.: SPS622

Tensile force: 10 kN

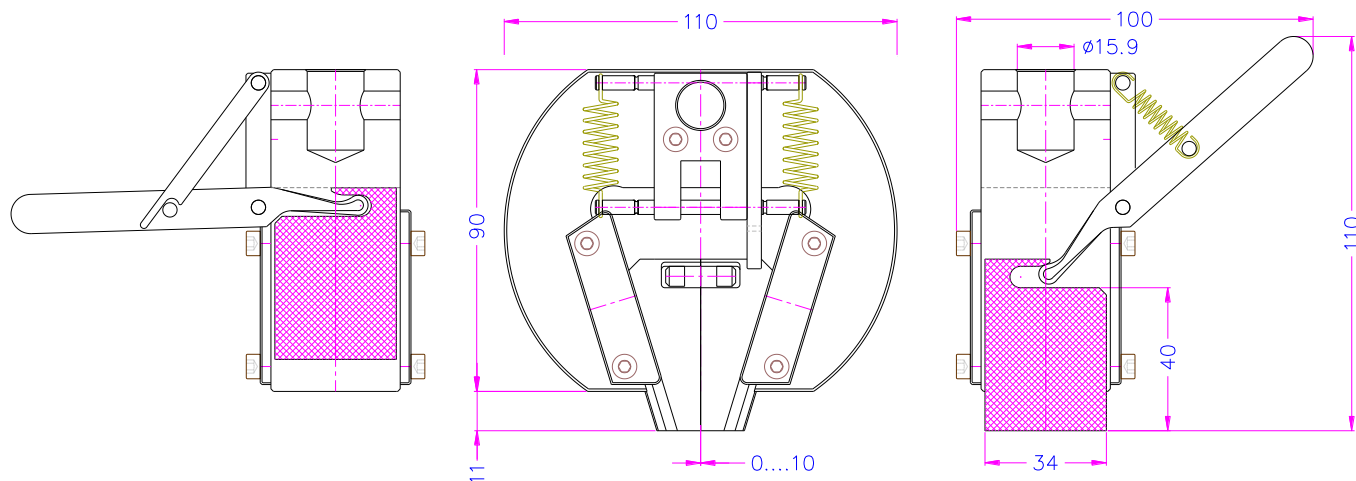
Coupling: Af159 or Af20
Further couplings on request

Temperature range: 0 ... +70°C
Further temperature ranges on request

Body: Steel, nickel-plated

Weight: 2.23 kg per grip incl. jaws

Scope of supply: 1 pair of grips



Jaws for SPS622

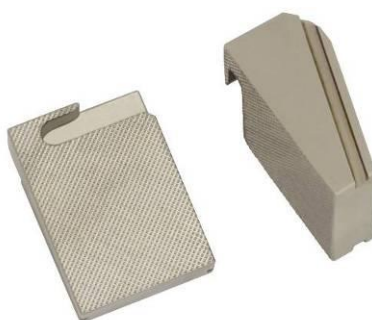
Scope of delivery: 1 set = 4 jaws

Item no.	Surface	Clamping surface HxW	Opening	Weight per pair
SPS622-BP	Pyramid (serrated) jaws	40x34 mm	0-10 mm	0.42 kg
SPS622-BP16	Pyramid (serrated) jaws	40x34 mm	6-16 mm	0.39 kg
SPS622-BP-W50	Pyramid (serrated) jaws	40x50 mm	0-10 mm	0.57 kg
SPS622-BP16-W50	Pyramid (serrated) jaws	40x50 mm	6-16 mm	0.48 kg
SPS622-BZ	Sawtooth jaws	40x34 mm	0-10 mm	0.42 kg
SPS622-BV	V-jaws	Clamping height 40 mm	2-10 mm Ø	0.43 kg

Jaw faces with differing dimensions and surfaces available on request.
Pyramid jaws are not applicable for steel specimens.



SPS622-BV



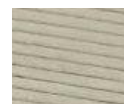
SPS622-BP



SPS622-BP:
Pyramids 1x45°
hardened steel



SPS622-BV:
Tooth pitch 1.2 mm
hardened steel



SPS622-BZ:
Tooth pitch 1.25 mm
hardened steel



SPS622-BZ



Locking function