

SCREW ACTION WEDGE GRIP

A combination of a screw action with a wedge grip brings the advantages of both principles to bear.

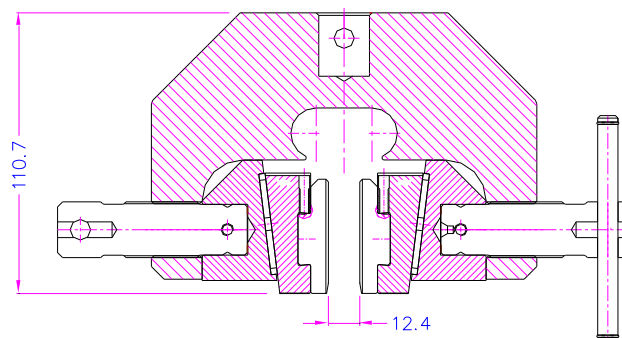
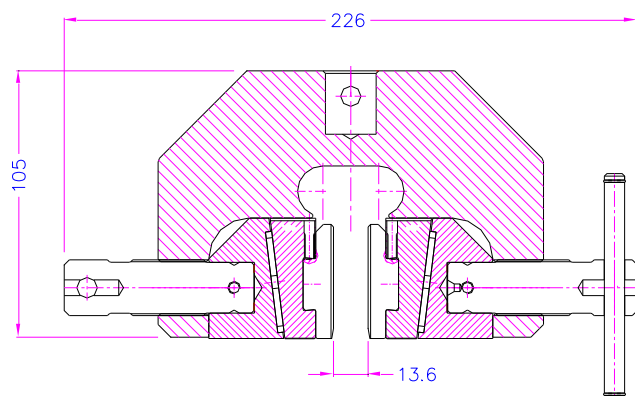
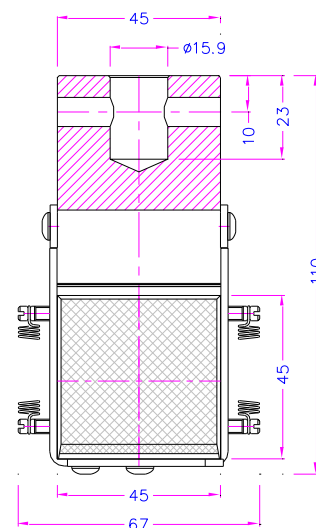
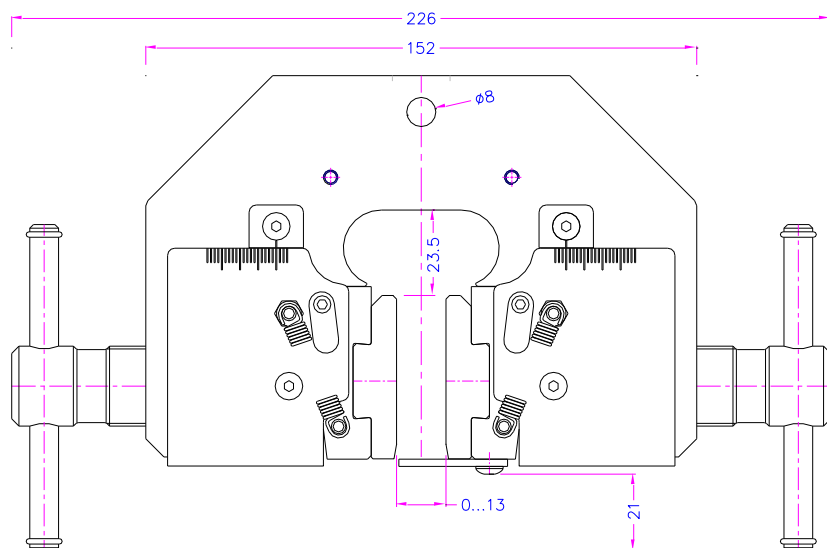
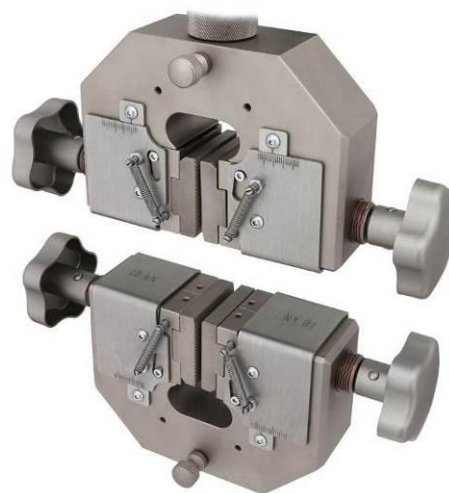
The specimen is pre-tensioned by the screw movement.

Under tensile load the clamping force increases due to the wedge effect.

Perfect for testing difficult materials.

Asymmetric clamping for shear tests possible.

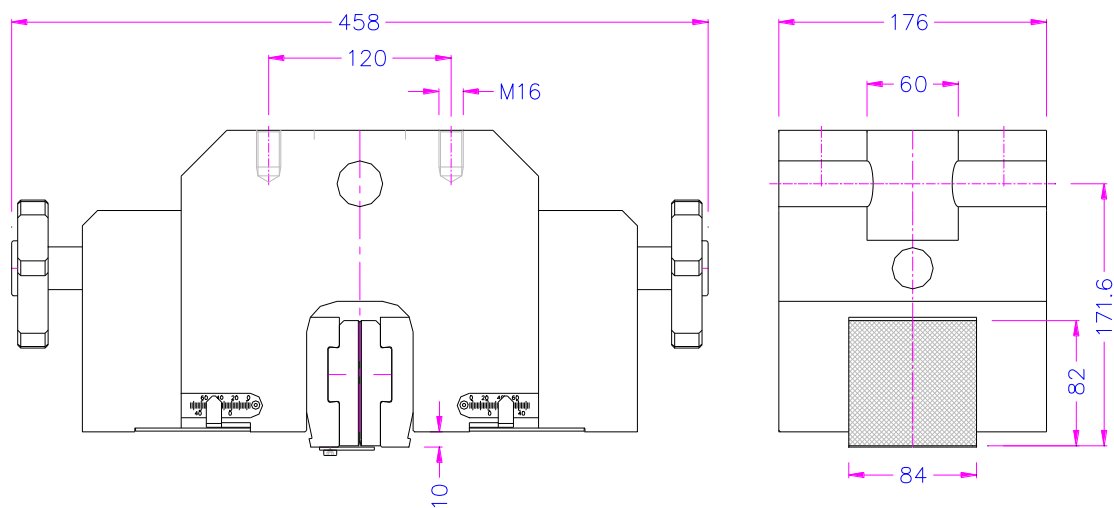
Item no.:	SPS127-10
Max. load:	10 kN
Coupling:	Af159. Further couplings on request
Opening:	See page 3
Body:	Steel, nickel-plated
Jaws:	Steel, hardened, nickel-plated
Temperature range:	-70°C ... +180°C Further temperature ranges on request
Weight:	5.2 kg per grip incl. jaws
Scope of supply:	1 pair of grips without jaws



Item no.:	SPS127-250
Max. load:	250 kN
Coupling:	Af60. Further couplings on request
Opening:	See page 3
Body:	Steel, nickel-plated
Jaws:	Steel, hardened, nickel-plated
Temperature range:	-70°C ... +180°C Further temperature ranges on request
Weight:	76.6 kg per grip incl. jaws
Scope of supply:	1 pair of grips without jaws

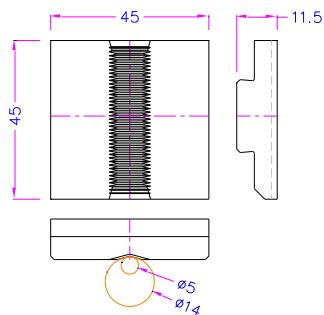
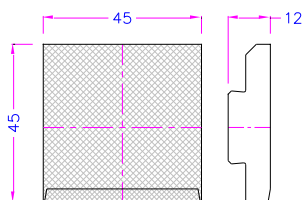


With a main shaft, both jaws are moved symmetrically at the same time and pre-tension the test specimen. If necessary, the connection can be disengaged to enable asymmetrical clamping, e.g. for shear tests.



Jaws for SPS127-10 Scope of delivery: 1 set = 4 jaws

Item no.:	Surface:	Clamping surface HxW:	Opening:
SPS127-10-EBP13	Pyramid (serrated) jaws	45 x 45 mm	0 – 13 mm
SPS127-10-EBV14	V-jaws	45 mm clamping height	5 – 14 mm

**Pyramid jaws**

- For flat samples
- Pyramids 1.2 mm x 45°
- Hardened steel 58 HRC
- Nickel-plated

**V-jaws**

- For round samples
- Tooth pitch 1.2 mm
- Hardened steel 58 HRC
- Nickel-plated



SPS127-10-EBV14 >> 0-13 MM

SPS127-10-EBV14 >> D5-14 MM

Jaws for SPS127-250 Scope of delivery: 1 set = 4 jaws

Item no.:	Surface:	Clamping surface HxW:	Opening:
SPS127-250-EBP25	Pyramid (serrated) jaws	82 x 84 mm	0 – 25 mm

