

Super Dumbbell – the ultimate punching knife with replaceable precision cutting blades

Super Dumbbell has a spring type ejector, is equipped with 5 sets of precision spare blades and therefore represents a set of six punching knives in total. It is ideally designed for manual and pneumatic presses.

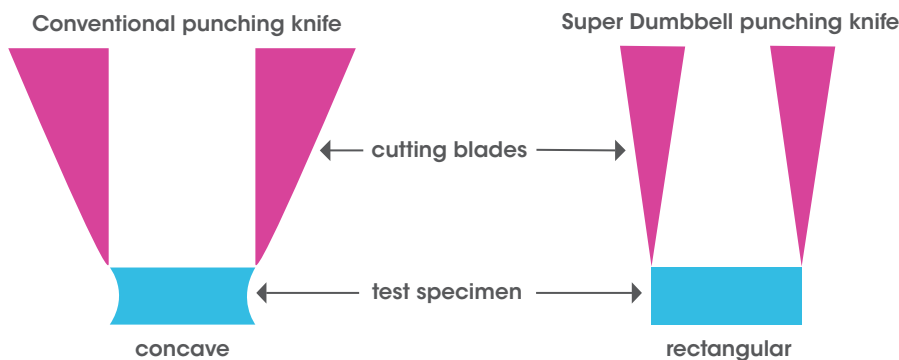
Excellent price-performance-ratio

"6 knives for the price of 1"

Replaceable precision cutting blades

- Japanese carbon steel: ultra-hard – extremely sharp – maximum cut resistance
- Easy replacement
- No regrinding
- No downtime
- Ultra-thin symmetrical cutting blades minimize concave test specimen cross sections (Fig. 1)
- No more premature tearing of the test bars
- Up to 10% higher tensile strength or elongation at break values
- Extremely smooth cut surfaces of test specimens (Fig. 2)
- Always available separately

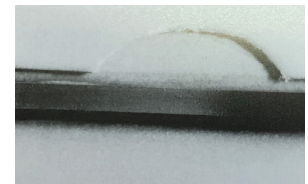
Fig. 1: Cutting blade symmetry



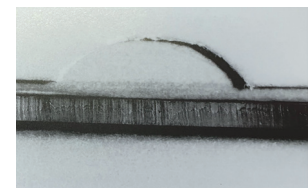
Conventional cutting blades are thicker, blunter and asymmetrical to the cutting edge, creating concave specimen cross sections that lead to significant measurement errors.

The ultra-thin, ultra sharp symmetrical Super Dumbbell cutting blades produce rectangular specimen cross sections and thus high-precision specimens for reliable and reproducible test results.

Fig. 2: Cut surfaces of test specimens



Super Dumbbell punching knife



Conventional punching knife

Guarantee for:

- High-precision test specimens
- Reliable and reproducible test results

Ideally suited for:

- High polymer materials such as rubber, plastics, etc.
- Standards of all kinds, such as ISO, DIN, JIS, ASTM, IEC, etc.



Super Dumbbell punching knives



Super Dumbbell punching knife set